

<b>Title:</b>	How to Upgrade Firmware of Full Managed Switch	<b>Version:</b>	v1.0	<b>Date:</b>	10/11/2023
<b>Product:</b>	Full Managed Switch			<b>Page:</b>	1 of 8

## Preparation

---

1. Device: Full Managed Switch (DS-3E25XX, DS-37XX series).
2. Laptop.
3. Console line or network line.
4. Software: SecureCRT, TFTP.
5. File: Firmware file.

# How to Upgrade Firmware of Full Managed Switch

---

## 1. Connect to the Switch

- 1.1 Use the USB port of console cable to connect to laptop directly, and the other RJ45 port to connect the console port of switch.

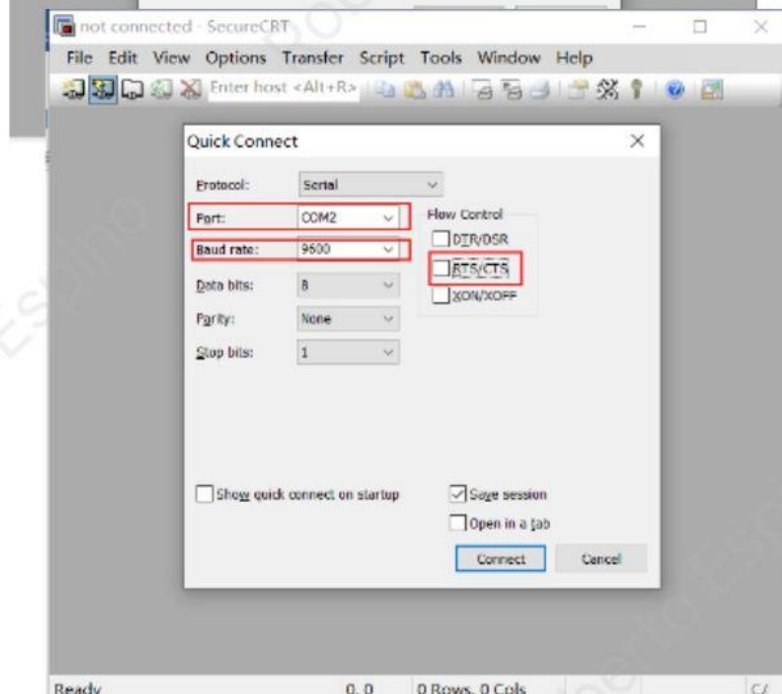
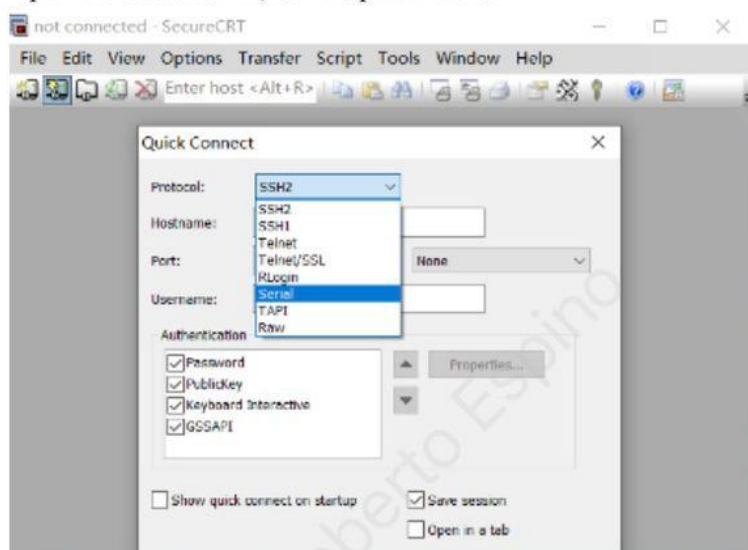


- 1.2 Check the Device management of laptop like the snapshot:\

Title:	How to Upgrade Firmware of Full Managed Switch	Version:	v1.0	Date:	10/11/2023
Product:	Full Managed Switch			Page:	2 of 8

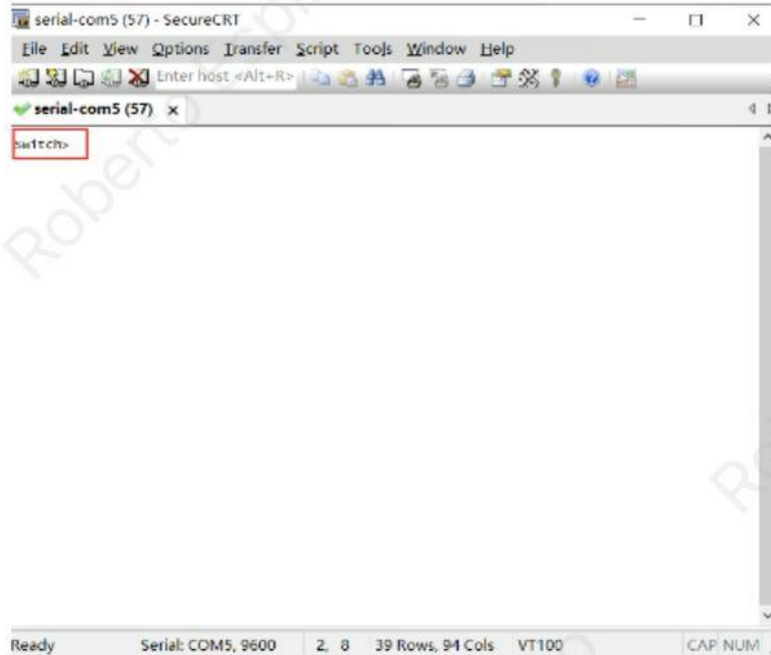


1.3 Open the SecureCRT, set the parameters:



<b>Title:</b>	How to Upgrade Firmware of Full Managed Switch	<b>Version:</b>	v1.0	<b>Date:</b>	10/11/2023
<b>Product:</b>	Full Managed Switch			<b>Page:</b>	3 of 8

1.4 After setting these parameters, click the “Connect”:



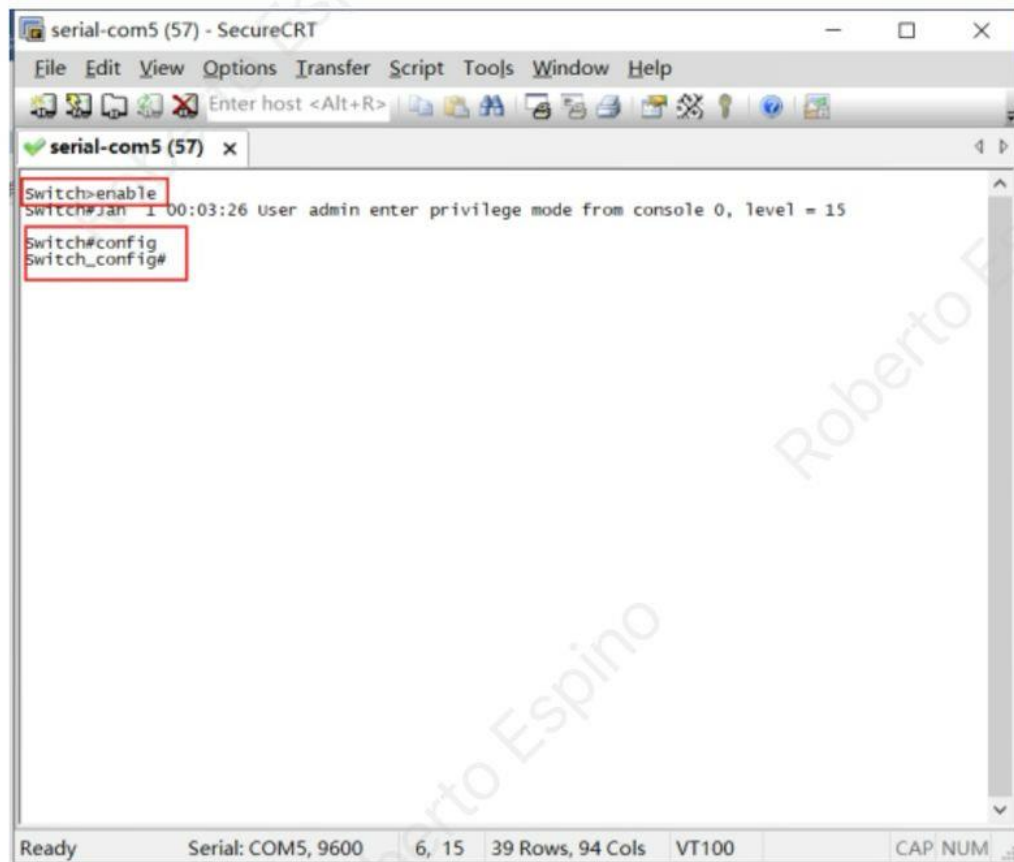
## 2. Upgrade

Here are two ways to upgrade:

### 2.1 website:

2.1.1 Connect to the switch; in the first snapshot, we can find this view “switch>”, input “enable” and “config”;

Title:	How to Upgrade Firmware of Full Managed Switch	Version:	v1.0	Date:	10/11/2023
Product:	Full Managed Switch			Page:	4 of 8



2.1.2 enable the HTTP server of switch by commands:

```
enable
config
ip http server
ip http http-access enable
aaa authentication login default local
aaa authentication enable default none
username admin password admin
```

the default ip address is 192.168.1.64/24, you can change it of vlan1 by these commands:

```
interface vlan 1
ip address x.x.x.x network mask
```

2.1.3 login the website

<b>Title:</b>	How to Upgrade Firmware of Full Managed Switch	<b>Version:</b>	v1.0	<b>Date:</b>	10/11/2023
<b>Product:</b>	Full Managed Switch			<b>Page:</b>	5 of 8



System Mgr>>system software, and then we can upgrade this device.



## 2.2 commands:

2.2.1 Setting the TFTP tools. Including the path of Firmware file, and the Server interface is the ip address of laptop.